



Care Manaakitanga
Respect Whakaute
Honesty Pono

Update...

Te Kura o Hepara Pai



Te Kura o Hepara Pai

Care Manaakitanga
Respect Whakaute
Honesty Pono

Thursday 06 March/ Poutūterangi 2025

Term Dates 2025

Term	Start	Finish
1	Tuesday 28 January	Friday 11 April
2	Monday 28 April	Friday 27 June

Upcoming Dates

21 March	Whole School Assembly, Room 9, 2.15pm
25 March	Three way conferences 2PM (early finish)
26 March	Three way conferences 3PM
28 March	Whole School Prayers Room 3, 2.45pm
31 Mar- 4 April	Cultural Week
3 April	Cultural Dress Day
4 April	Whole School Assembly, Room 4, 2.15pm
8 April	BOT Meeting
10 April	Colourful Clothes Day - PTA fundraiser Bring a Chocolate Block

Please look carefully, as some of these dates have changed.

Three-Way Conferences -Tuesday 25 March & Wednesday 26 March

Booking Appointments - LAST CHANCE TO BOOK (booking closes TOMORROW at 12pm Friday 21st)

Please visit www.schoolinterviews.co.nz and enter code **3gfed** for the event code and follow the instructions.

REMINDER: School will close at 2PM ONLY on Tuesday 25 March. Please make sure you have arranged your child's pick up. OSCA will be available from 2PM.

Special Character

Good Shepherd Awards

Congratulations **George Merz** and **Ramona Pearce** on receiving the GSS Awards in week 8. You are both shining examples of how we can uphold the school's values of Respect, Care and Honesty. Well done and well deserved.



St Joseph's Day



What a successful and exciting day we had celebrating this special Saint to Good Shepherd. We started the day by attending Mass and then our leaders organised some wonderful activities for the St Joseph Day tabloid sports.

A big thank you to everyone who helped organise the day, and to the PTA for our new house banners!



Good Shepherd Parish Mass times

We encourage all families to attend Mass together, particularly those children who are participating in the Sacramental programme. Sunday Mass is at **9.30am** - Second Sunday of Lent.

Fr. Martin Away

Please note that Father Martin is currently away and will be unavailable until his return on 24 March. The Supply Priest at Good Shepherd Parish is Father Ezio. If preference forms need to be signed Fr. Ezio will be able to do so.

Lent Season

Lent is a time of reflection, prayer, and preparation as we journey towards Easter. It's a season to grow closer to God, make sacrifices, and show kindness to others.

We invite you to stand with us in prayer during this sacred time. Let us pray for our families that our homes be filled with love and unity. For the parents and whānau of our children, that they feel God's strength and guidance in their daily lives. For our staff, may they continue to serve with dedication and heart.

And most of all, for our tamariki, may they feel God's love and grow in faith and confidence every day.



A Lenten Prayer:

Loving God, as we walk this Lenten journey, open our hearts to Your love. Help us to grow in kindness, patience, and faith. Bless our families, our school, and especially our children, that they may always feel Your presence guiding them.

Amen.

May this season of Lent bring renewal, peace, and blessings to our Good Shepherd community.

Sports

E/A Cricket Zones

We had a very successful day at the Eden/Albert cricket zones on Tuesday. We won 1 game and narrowly lost 2 games. Unfortunately our last game was rained out and we came back to school early. The children all improved their skills and really enjoyed the competition.

In & Around School

Saint Patrick's Day

On Monday, our school was a sea of green as we celebrated St. Patrick's Day with joy and plenty of Irish cheer! With so many of our families sharing Irish heritage, it was a wonderful way to honor faith and tradition.

St. Patrick's story reminds us of the power of kindness and faith. These values we cherish in our Catholic school community.



Second Hand Uniform - unavailable from Friday week 10

In preparation for internal office block painting, the second hand uniform cupboard will be unavailable from Friday 04 April as it will be packed away and inaccessible until Term 2. Friendly reminder that from Term 2 through to Term 3, all children will require a full school winter uniform. If you need to acquire clothing for winter, please come in before the end of week 10.

Te Reo Lessons with Matua Tainui

It was a Rawe (awesome) time to have parents and their children be part of Te Reo Māori classes. It was great to learn Māori pūrākau (Māori stories), learning the language and a Waiata!

I will hold more sessions next term for any Whānau that wish to be part of it and start or restart their Māori journey.

Remember - Ko te Manu e Kai ana I te mātauranga Māori, nōnā te ao tukupū - The bird that eats the Māori knowledge, owns the universe.

Waste Free Lunches at GSS

A reminder about the Waste Free Lunchbox initiative at Good Shepherd School. Please review the attached flyer for our guidelines on this. It was great to see the enthusiasm and pride that the tamariki approached this initiative with last year, and it would be wonderful to see this continuing/increasing in 2025.

[How to pack a waste free lunch box](#)

Information for Whānau

Attendance Dues and School Contributions

Thank you for all your payments received so far. Accounts were emailed to Parents and Caregivers a

few weeks ago so if you haven't received them, please check your spam or get in touch for a copy to be sent. Tax receipts will be sent out once all March payments have been allocated in early April.

Please don't hesitate to contact Ilana in the school office to arrange payment plans as regular payments (or per term) are required by the Catholic Diocese.

Attendance – Every Day Counts, Every Minute Matters!

At GSS, regular attendance is key to your child's learning, friendships, and future success. We aim for every student to be at school **at least 90% of the time**.

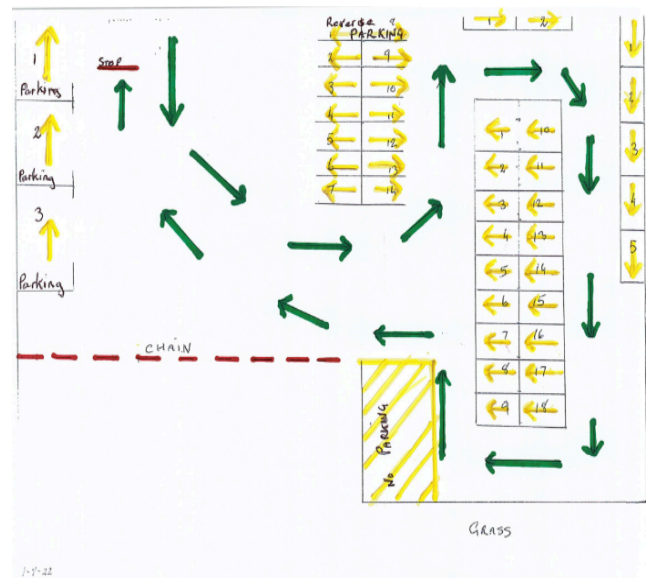
So far, we've reached **91% attendance** in Term 1. Missing even a few days can affect learning, test results, resilience, and social skills.

We understand some absences are unavoidable, like for medical reasons or a funeral/tangi. But family holidays and non-school activities aren't valid reasons to miss school.

If your child will be absent, please call, email, or use the app. It would be appreciated to let us know the reason to code your child's absence accurately. If you're having trouble getting them to school, talk to us we're here to help!

If you're interested to see how your child's attendance is, please feel free to contact the school office.

Volcanic Street Entrance Car Park



Just a quick and friendly reminder to take extra care when entering the Volcanic Street Car Park. There are often children and parents walking, so please keep an eye out and drive safely. Also, the cones are there for a reason. Please respect them, as they help keep everyone safe. Thanks for looking out for each other!

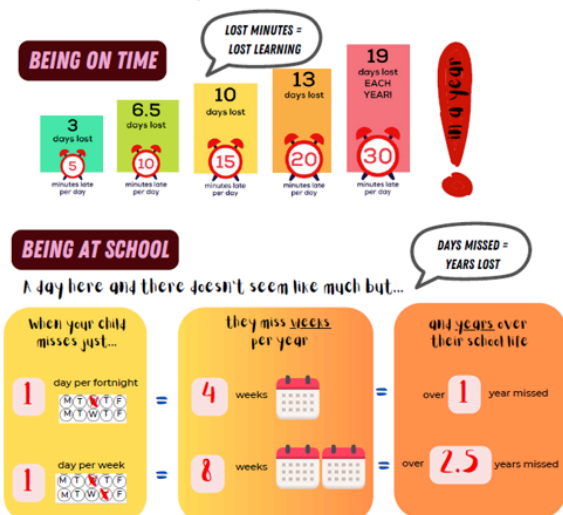
***Carpark map from the talented Sharyn :)**



All parents and caregivers are automatically part of the PTA, so everyone is welcome. These meetings are a fantastic way to connect with other parents and stay informed about what's happening at the school. Plus, with this being a Fair Year, there are lots of exciting plans ahead! Being part of the PTA committee is a fun and rewarding way to give back to our awesome GSS community!

If you have any questions, feel free to reach out to nzgoodshepherdpta@gmail.com. We look forward to seeing you next week!

Attendance Matters!



Sushi/Pizzas/Ice-Blocks

Friday Lunch Orders

Lunch orders are available every Friday via [Kindo](#). Place your order by 8:30 am on Friday, or plan ahead for multiple weeks. Cancellations are accepted until 8:30 am on the Friday you ordered for.

Sushi from Nagoya Sushi (Morningside)

- Teriyaki Katsu Chicken on Rice – \$8.50
- Sushi Packs:
 - 4 Pack: Tuna/Chicken/Vegetarian – \$6.00 | Salmon – \$6.50
 - 6 Pack: Tuna/Chicken/Vegetarian – \$7.50 | Salmon – \$8.00
 - 8 Pack: Tuna/Chicken/Vegetarian – \$9.00 | Salmon – \$9.50

Nice Block Ice-Blocks

Available Fridays at lunch. Order via Kindo or bring a \$2 coin. If ordered online, children receive a hand stamp and must collect their ice block after the lunch bell. No carry-overs for missed pickups, thank you for understanding!

Pizza Day – Tuesday, 8th April

Pizzas from Domino's Sandringham. Orders close 6 pm, Thursday 03 April.

HOLIDAY PROGRAMMES

Monday 14 April - Thursday 24 April 2025*
held at both venues



Looking for an exciting way to keep the kids entertained these April school holidays?

Our action-packed school holiday programmes are filled with fun activities to match your child's interests, choose the perfect option for them and let the adventure begin!

Week One
Commences Monday 14 April
*No sessions on 18 April due to public holiday

Week Two
Commences Tuesday 22 April
*No sessions 21 and 25 April due to public holidays

Auckland Netball Centre
7 Allison Ferguson Drive
St Johns (OSCAR Accredited)

Windmill Park Venue
48 Windmill Road



To book or for more information please contact:
Caitlin Smaison, Development Programme Officer
T 09 280 4129 or M 021 577 105
E development@aucklandnetball.co.nz
www.aucklandnetball.co.nz





Sunday

23 March 2025

11am - 3pm

St Peter's College grounds, 23 Mountain Road, Epsom



Good Shepherd School FAIR

THIS YEAR IS A FAIR YEAR!

GET READY FOR ONE OF THE BIGGEST AND MOST EXCITING EVENTS ON THE SCHOOL CALENDAR—OUR SCHOOL FAIR! IT'S ALWAYS A DAY PACKED WITH FUN, FOOD, AND FANTASTIC FESTIVITIES FOR THE WHOLE FAMILY, AND WE CAN'T WAIT TO BRING OUR COMMUNITY TOGETHER FOR IT.

JOIN THE FUN – GET INVOLVED!

BIG OR SMALL, EVERY HELPING HAND COUNTS! WE'RE STILL LOOKING FOR TWO MORE FAIR COMMITTEE MEMBERS—COULD IT BE YOU?

A HUGE THANKS TO THOSE ALREADY ON BOARD:

- ✓ FAIR CHAIR – AIMEE GREENHOUGH
- ✓ VICE-CHAIR – SARAH DRIVER
- ✓ SCHOOL LIAISON – BEN FAHEY
- ✓ FOOD STALLS – CARLY ELLIS
- ✓ MARKET STALLS – LAURA CLARK
- ✓ CLASSROOM & ACTIVITY STALLS – [TO BE ASSIGNED]



NOT ON THE COMMITTEE? NO PROBLEM!

YOU CAN STILL HELP BY:

- RUNNING A STALL
- SETTING UP OR PACKING DOWN
- HELPING BEHIND THE SCENES
- READY TO JUMP IN? LET US KNOW!
- MARK YOUR CALENDARS—IT'S GOING TO BE AN AMAZING DAY!



CAN YOU DONATE A PRIZE OR SPONSOR US?

KNOW A BUSINESS THAT COULD DONATE A PRIZE OR SPONSOR THE FAIR? IT'S A GREAT WAY TO SUPPORT THE SCHOOL AND GAIN COMMUNITY EXPOSURE!

SAVE THE DATE!!
22 NOVEMBER
SATURDAY